


SITE LOGISTICS PLAN Rev. 8





Rogue Bowl Renovation - Phase 1

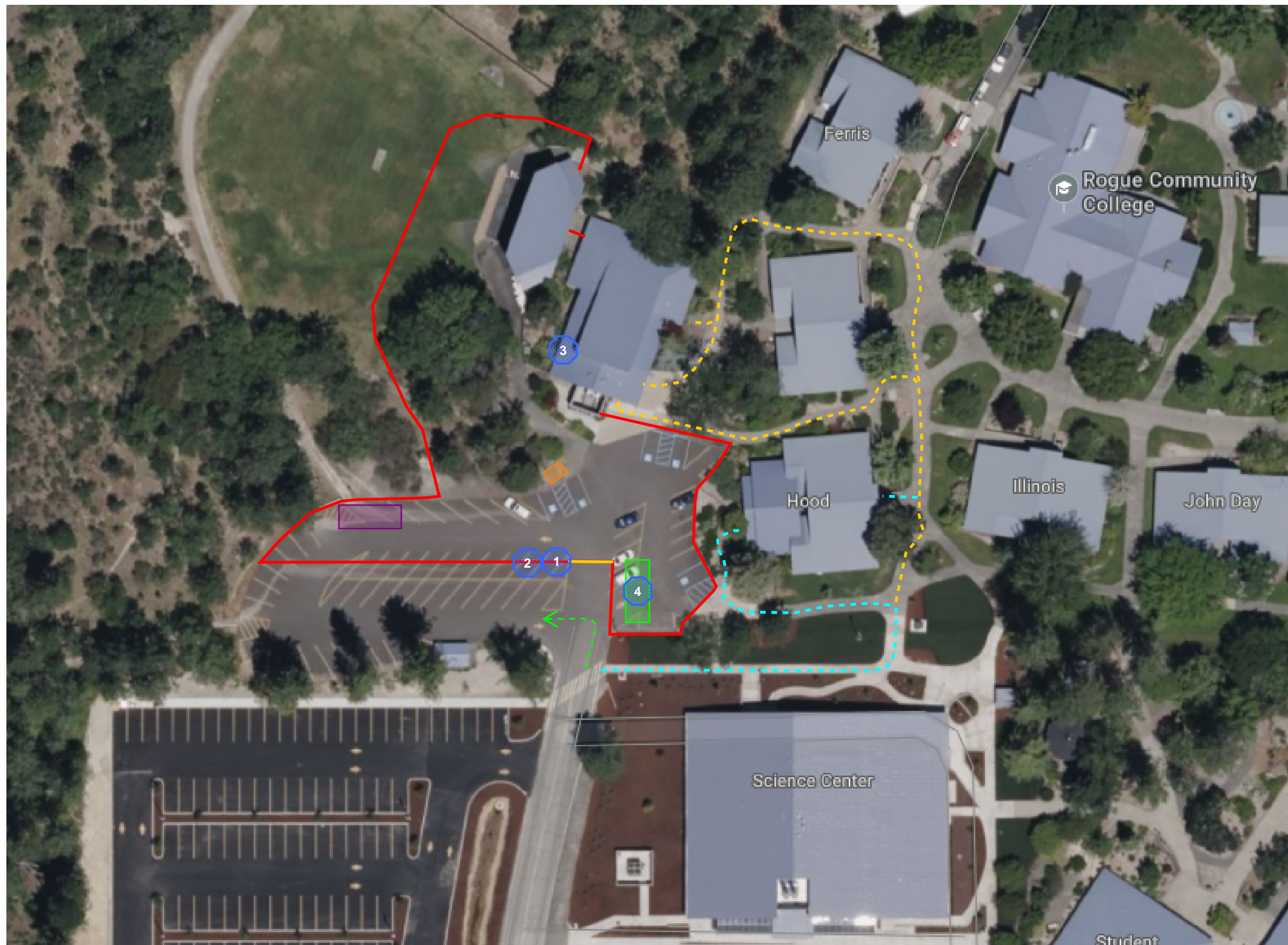
3345 Redwood Hwy
Grants Pass, OR 97526

LINE TYPES

-  Contractor Trailer
-  Construction Staging Area
-  Toilet/Wash Facilities
-  Perimeter Security Fencing - 6'
-  Gate
-  Access to Rogue Auditorium
-  Access to Hood Building
-  College Parking

SIGNAGE

-  Construction Entry Signage
-  Parking Instruction Signage
-  Custom Sign: "Emergency Exit Only - Entering Construction Zone"
-  Job Box: Safety Policy, MSDS, & Required Employer Postings



***This construction zoning will be in effect May 28th to June 7th 2024.**