

What is NEOED/NEOED Learn?

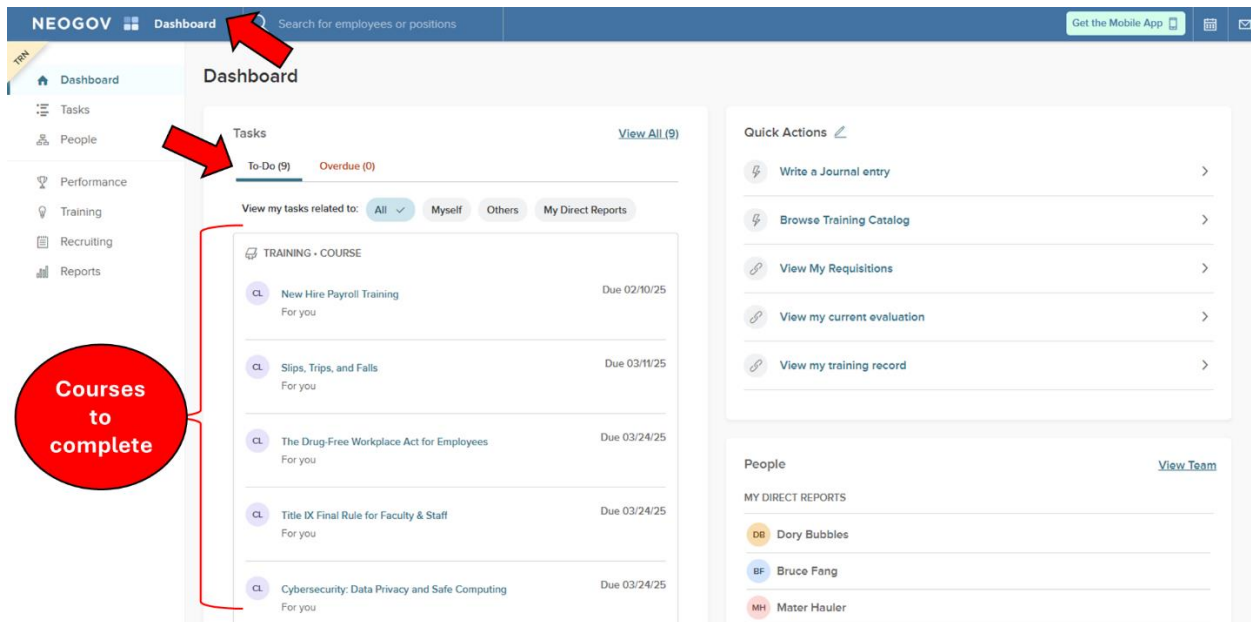
NEOED is a computer system that streamlines everyday HR processes in one integrated system ranging from hiring, professional development, and training. NEOED Learn is a module that is a part of the NEOED platform to manage employee training. Learn will provide a centralized online system that can be easily accessed and will boost employee experience for annual training. Additionally, NEOED Learn has a growing course library of over 1,600 courses that will enhance and provide robust and engaging professional development opportunities to all employees.

Where is NEOED?

NEOED can be found at <https://login.neoad.com/authentication/saml/login/rogucecc>. You may be prompted to log into Microsoft, you will use your RCC email username and password to log in. The single-sign-on (SSO) link can also be found on the HR Website under the Current Employee tab.

I'm logged into NEOED - where is my training?

Make sure you are on your dashboard by clicking "Dashboard" in the upper left corner. All assigned training will populate in your "to-do" list.



The screenshot shows the NEOED Dashboard. The top navigation bar includes "NEO GOV", "Dashboard", and a search bar. The left sidebar contains navigation links for Dashboard, Tasks, People, Performance, Training, Recruiting, and Reports. The main content area is titled "Dashboard" and features a "Tasks" section with a "To-Do (9)" list. A red circle highlights the "Courses to complete" section, which lists several training courses with due dates. A red arrow points to the "Dashboard" link in the top left, and another red arrow points to the "To-Do" section.

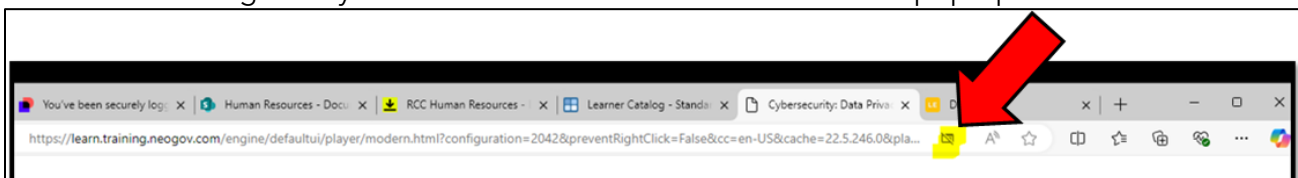
Course Title	Due Date
New Hire Payroll Training	Due 02/10/25
Slips, Trips, and Falls	Due 03/11/25
The Drug-Free Workplace Act for Employees	Due 03/24/25
Title IX Final Rule for Faculty & Staff	Due 03/24/25
Cybersecurity: Data Privacy and Safe Computing	Due 03/24/25

NEOED does not look like I expected or something weird is happening

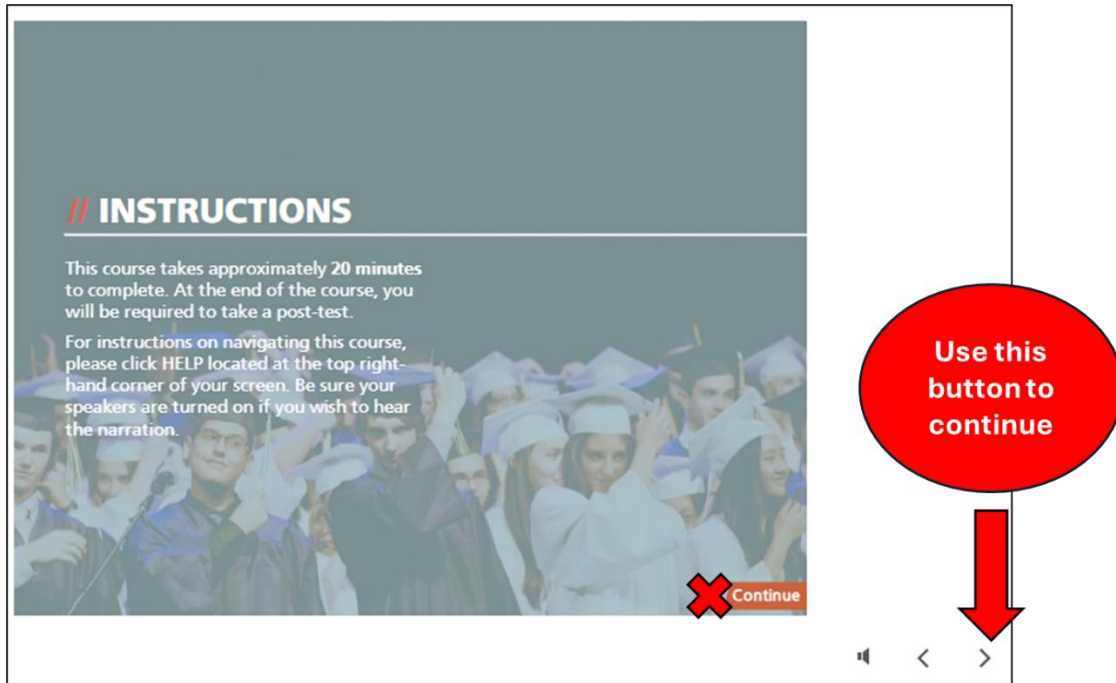
Make sure you are using the right internet browser. NEOED only works with Google Chrome and Microsoft Edge.

I tried to start training, but nothing happened!

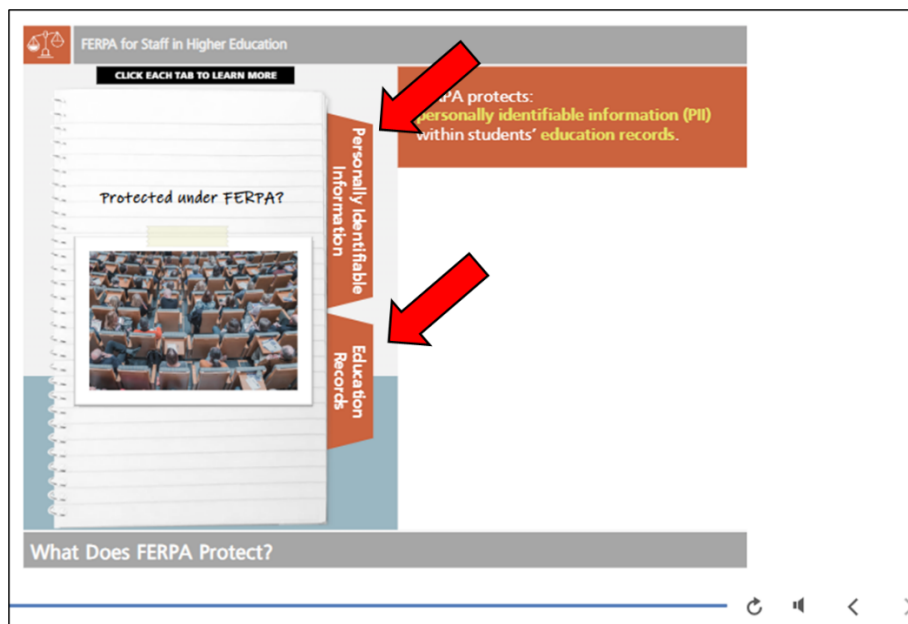
Most likely you have a pop-up blocker enabled. On your screen look at the "URL" line - if there is a window with a strike through line you will need to click that and "enable" the pop-ups.



I've been working on a training but the "Continue" button isn't working!
Some courses require you to click the arrow in the bottom right corner



I cannot continue and the right arrow button is greyed out, what do I do?
Sometimes a course has interactive portions that you need to explore before you can proceed.



Please contact Human Resources at 541-956-7329 if you have any questions or need assistance.